

Reference standard IEC 60169-4

1. Electric Performance

Impedance : 50 Ω

Frequency range : DC – 6GHz

V.S.W.R : 1.10max (0-3GHz)

1.20max (3-6GHz)

Insertion Loss : 0.05max (0-3GHz)

0.15max (3-6GHz)

PIM : -125dBm (2x43dBm 697MHz-3000MHz)

Insulation resistance : 5,000MΩ

Proof voltage : 4,000V min

Conductor resistance : Outer conductor 0.2mΩ max

Inner conductor 0.8mΩ max

2. Mechanical Performance

Retention : 5.88N min

Mechanical wear (hypo-) : 500

Whorl pull : 500N

3. Material and Plating

Component

Material

Plating

Outer conductor Brass

Ag 1.0 -> Copper-Tin-Zinc 5μm

Inner conductor Beryllium copper

Ag 5 μm

Insulation PTFE

4. Environment

Temp. range : -55°C ~ +155°C

Thermal shock : US MIL-STD 202. Meth.107, Cond B

Vibration : US MIL-STD 202. Meth.204, Cond B

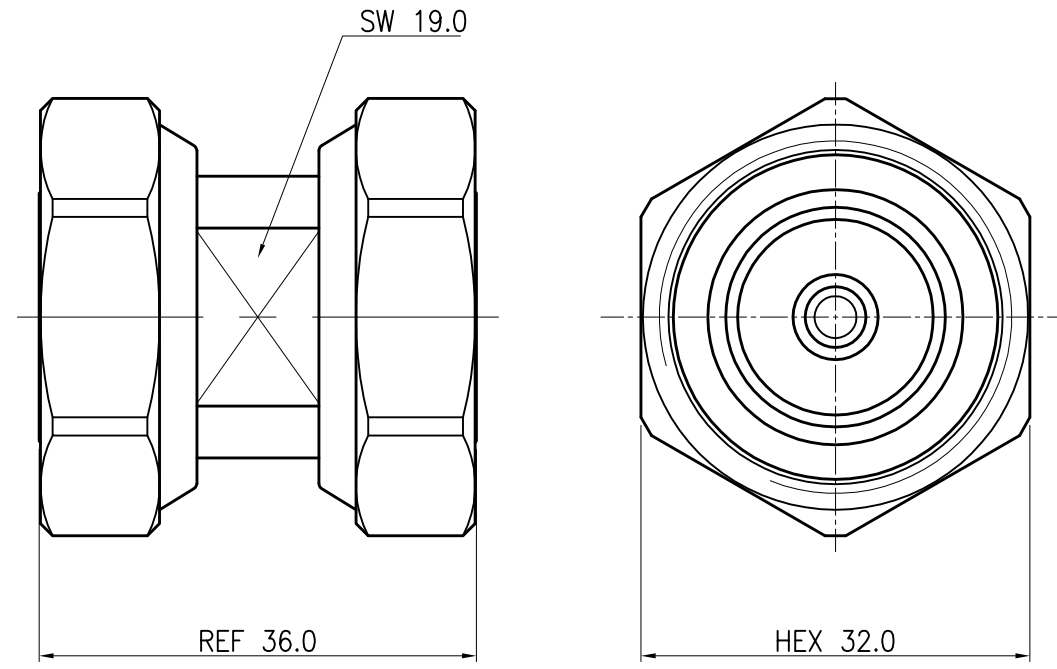
Shock : US MIL-STD 202. Meth.213, Cond I

RoHs Compliance : Directive (EU) 2015/863

5. Packaging : Individually pack in Plastic Bag and Small

White Box Labels “xxx” on bag and small white box.

REV	DESCRIPTION	DATE	ECO	APPR
A	Register drawing	19.10.11		<i>Patrick, Cho</i>



UNLESS OTHERWISE SPECIFIED, DIMENSIONS ARE IN MILLIMETERS AND TOLERANCES

REMOVE BURRS. BREAK SHARP EDGES

MATERIAL	SEE NOTE 3.	DRAWN	<i>Sly Choi</i>	DATE	2019.10.11	TITLE	IN-SERIES ADAPTOR 7/16 MALE TO 7/16 MALE	SCALE	N.S	SHEET	1 of 1
FINISH	SEE NOTE 3.	ENGINEER	<i>JH Park</i>	DATE	2019.10.11						
REFERENCE		APPROVED	<i>Patrick, Cho</i>	DATE	2019.10.11						
		CAD FILE	CAD:/CONNECTOR/7_16 DIN		DWG SIZE	A4	DRAWING No.	7163201-323-131		REV.	A

